

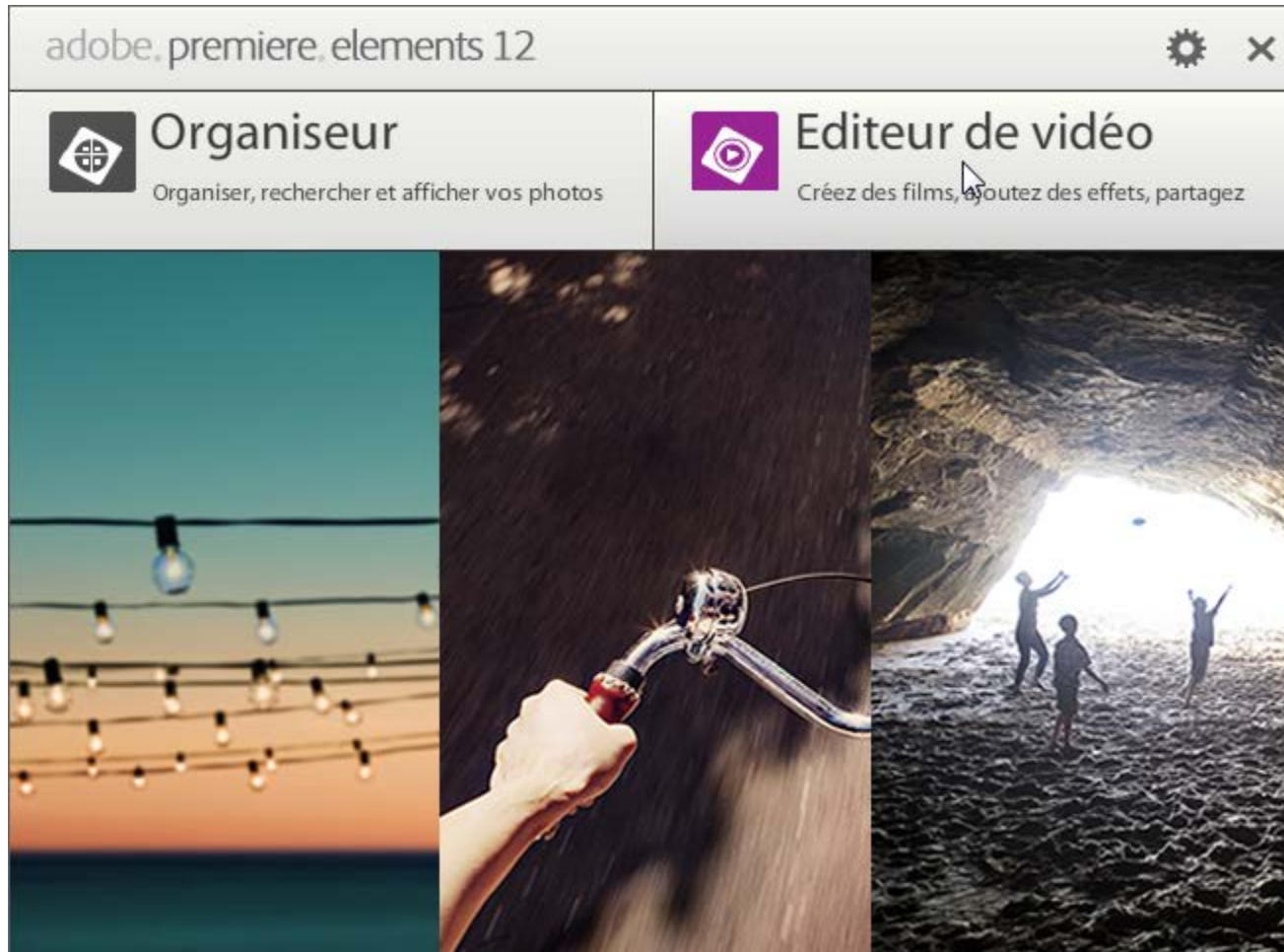
# Importation de données – Adobe Premiere Elements

**Coralie VINCENT**

**SFL, UMR 7023 - CNRS / Université Paris8**

# Lancement de Premiere

2



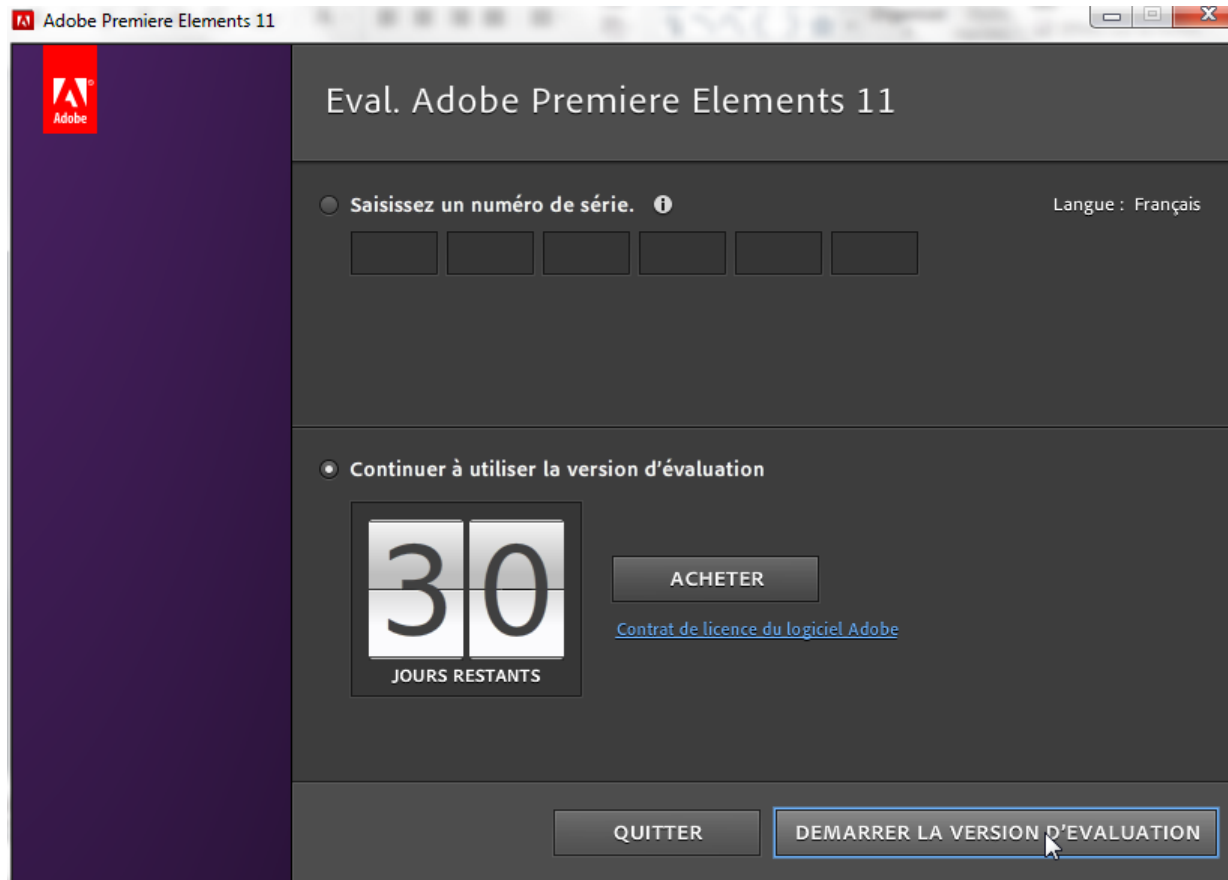
# Lancement de Premiere

3



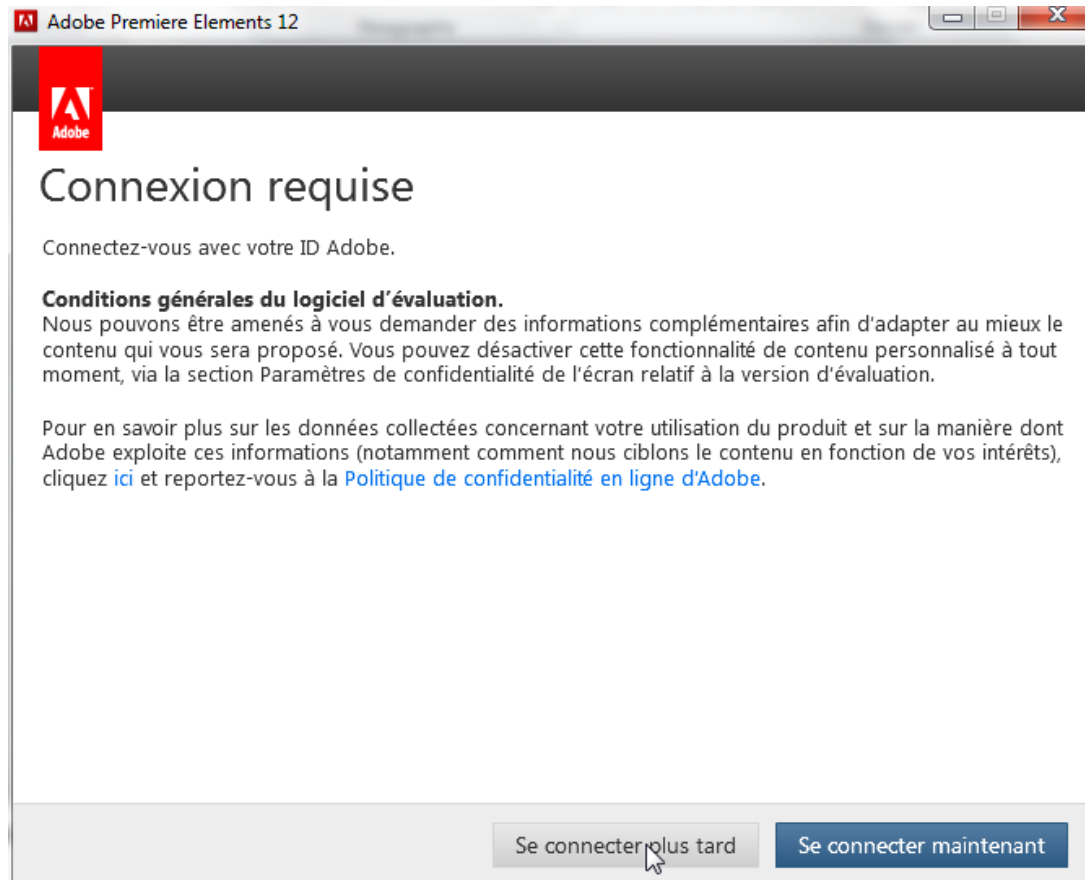
# Lancement de Premiere

4



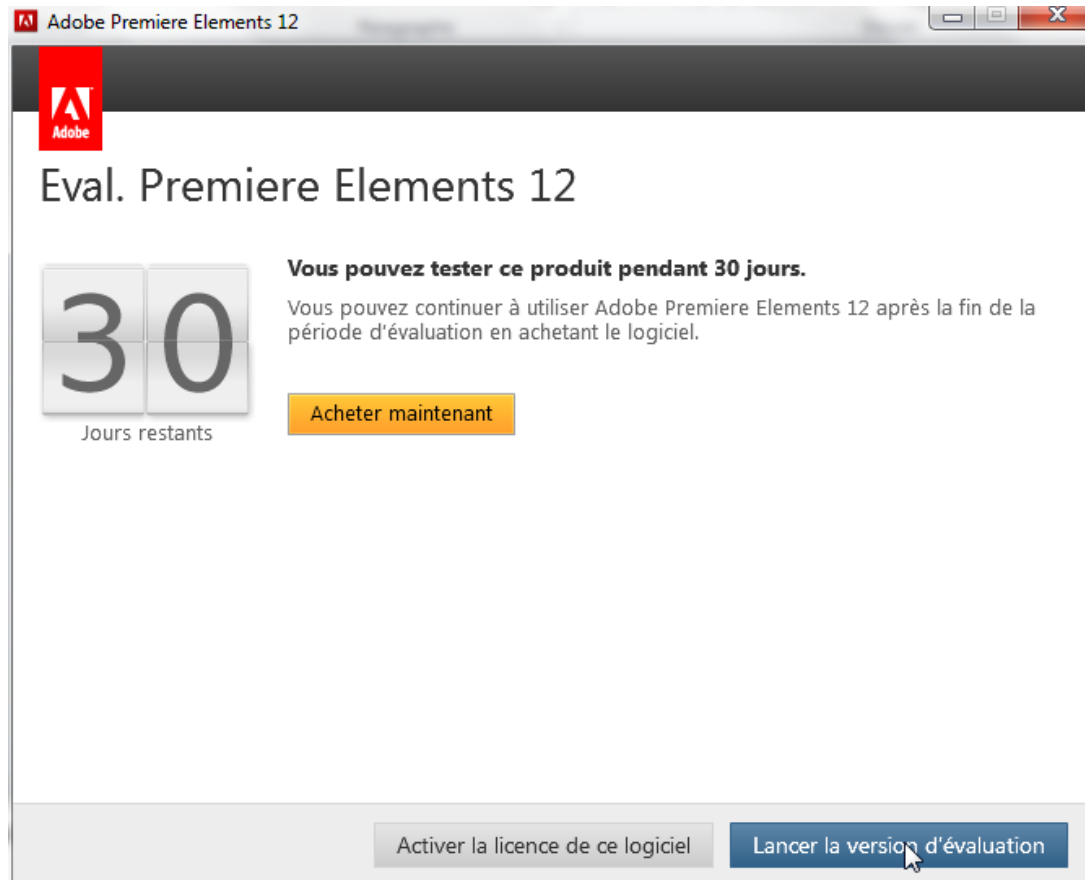
# Lancement de Premiere

5



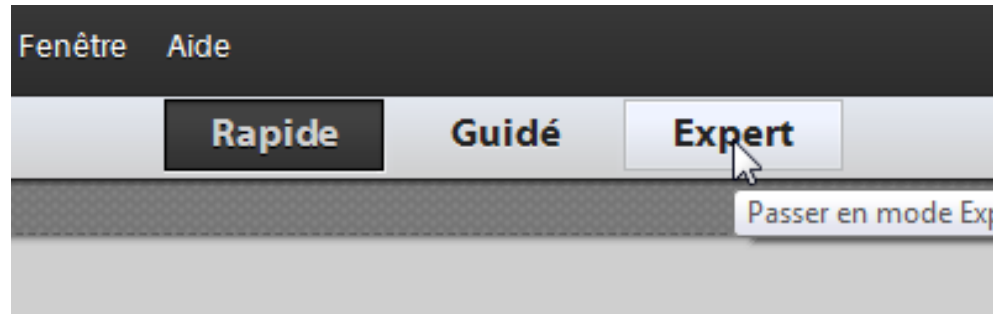
# Lancement de Premiere

6



# Lancement de Premiere

7



# Importation de fichiers

8

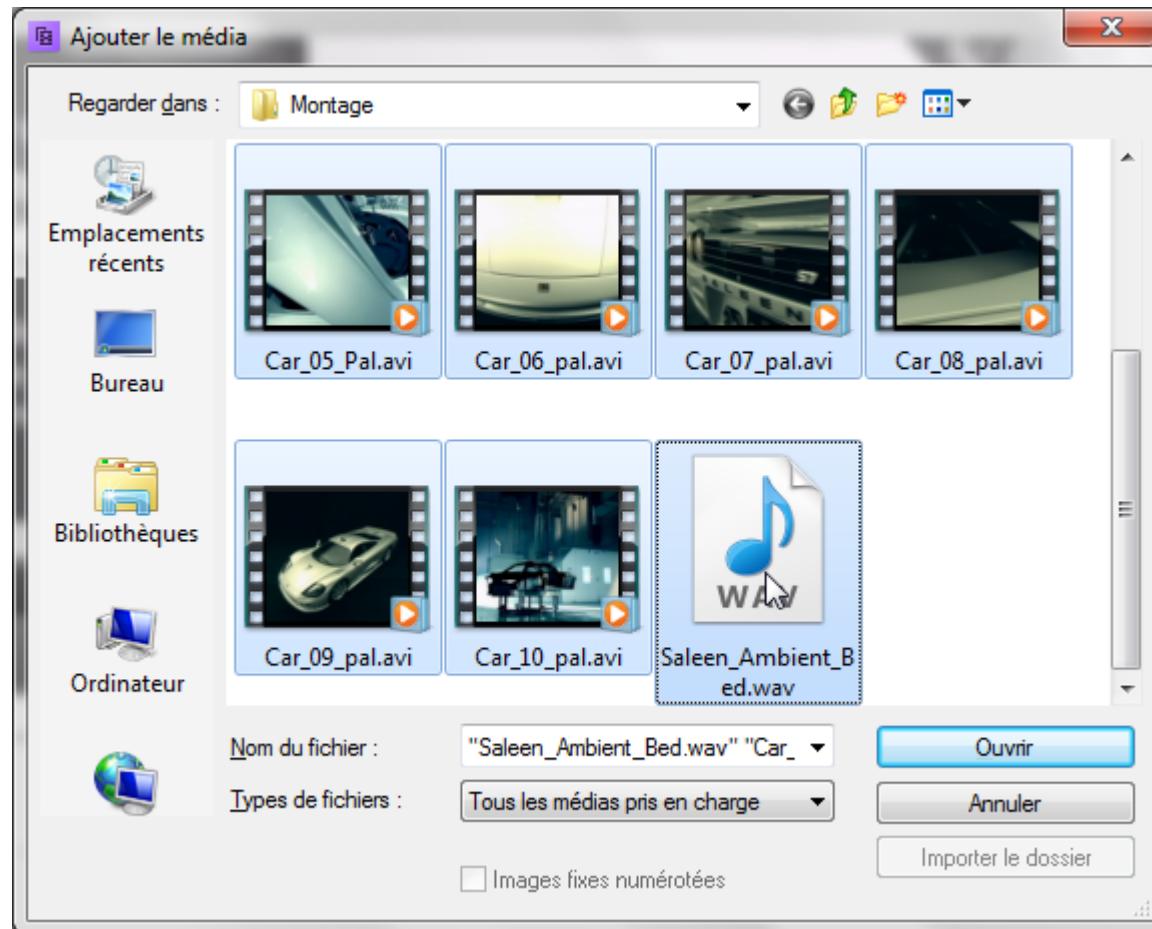
## Ajouter le média





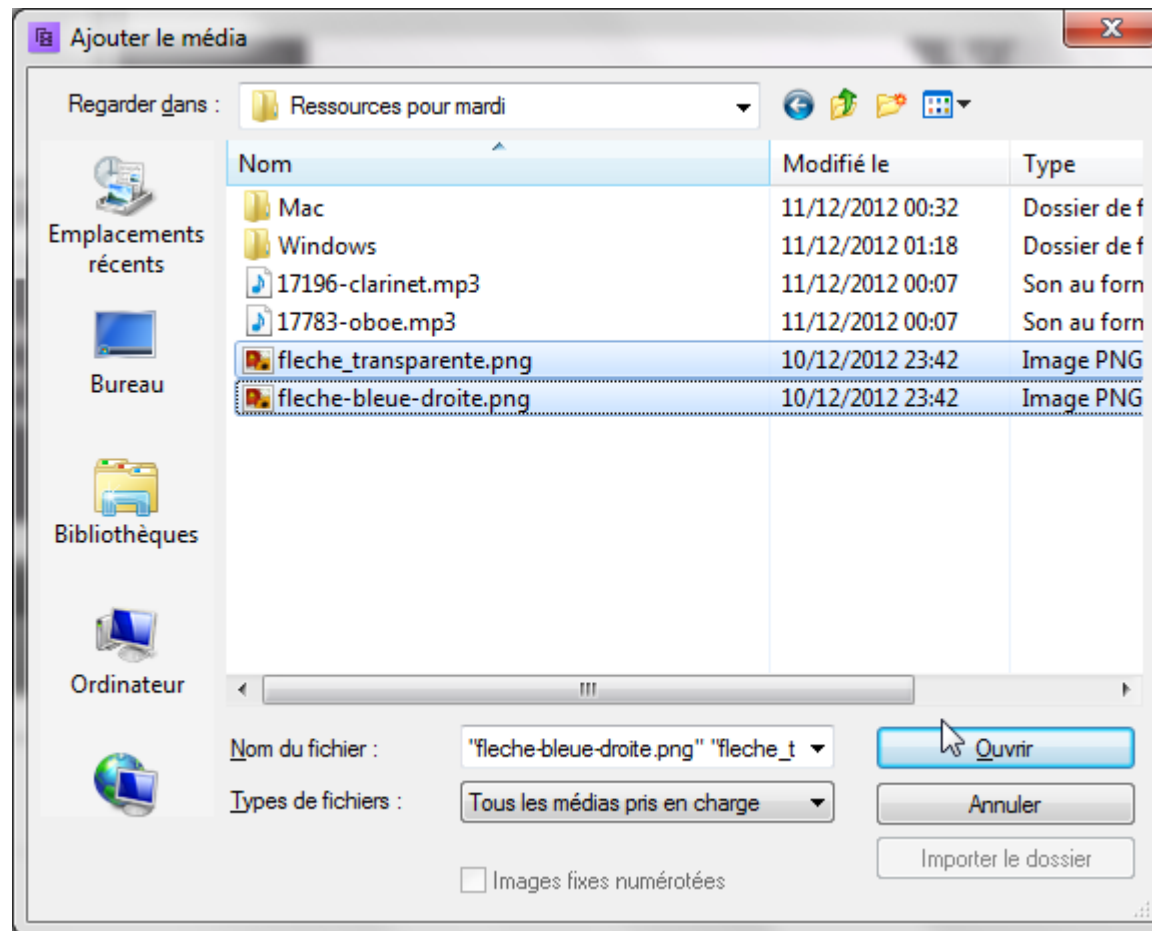
# Importation de fichiers

9



# Importation de fichiers

10



Vous devez avoir : 10 vidéos, un fichier son, 2 images